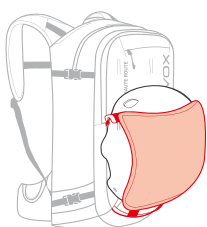


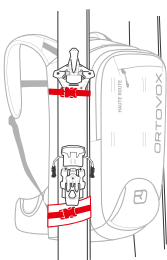


SIZE/ GRÖSSE/ TAILLE/ DIMENSIONE	40l	38l	32l	30l
WEIGHT/ GEWICHT/ POIDS/ PESO	1420g	1380g	1340g	1320g
MIN. WEIGHT/ MIN. GEWICHT/ POIDS MIN./ PESO MIN.	1380g	1340g	1300g	1280g
BACKLENGTH RÜCKENLÄNGE/ DOS/ LUNG. DEL DORSO	Regular	Short (S)	Regular	Short (S)

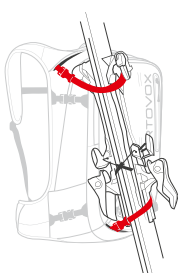
**HELMET FIXATION/ HELMNETZ**  
FILET CASQUE/ RETE DI FISSAGGIO CASCO



**A-SKIFIX**



**D-SKIFIX**



**HAUTE ROUTE  
BACKPACK  
VIDEO GUIDE:**



SCAN QR-CODE TO PLAY:



[www.ortovox.com/backpack-tutorial](http://www.ortovox.com/backpack-tutorial)

**DE** Zusätzliche Teile findest du in der Kartentasche.  
**EN** Additional parts are stored in the map pocket.  
**FR** Des accessoires supplémentaires se trouvent dans la poche pour la carte. **IT** I componenti aggiuntivi sono stivati all'interno del comparto per mappa.

**OFFICIAL SAFETY PARTNER:**

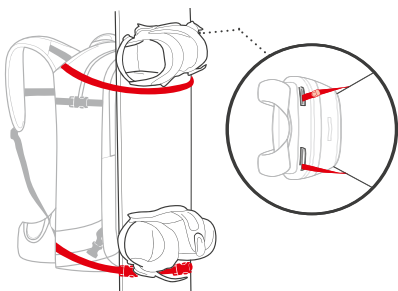
**Schweizer Alpen-Club SAC**  
Club Alpin Suisse  
Club Alpino Svizzero  
Club Alpin Svizzer



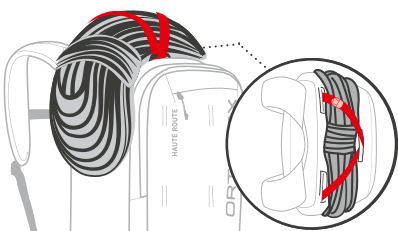
TOUR SERIES  
HAUTE ROUTE  
40 / 38 S / 32 / 30 S



**SNOWBOARD & SNOWSHOE ATTACHMENT /**  
SNOWBOARD- & SCHNEESCHUHALTERUNG /  
FIXATION DU SNOWBOARD ET DES RAQUETTES /  
FISSAGGIO SNOWBOARD E RACCHETTE DA NEVE

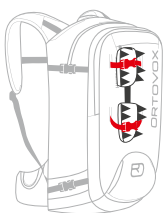
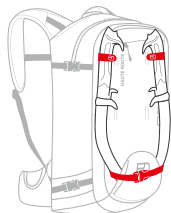


**ROPE ATTACHMENT / SEILFIXIERUNG /**  
FIXATION DE LA CORDE / FISSAGGIO CORDA

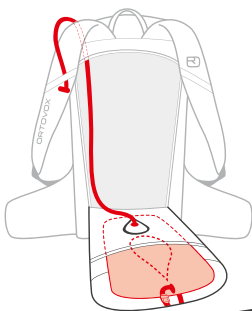


**ICE AXE FASTENING /**  
PICKELBEFESTIGUNG /  
FIXATION PIOLETS /  
FISSAGGIO PICCOZZA

**CRAMPON FASTENING /**  
STEIGEISENFIXIERUNG /  
FIXATION CRAMPONS /  
FISSAGGIO RAMPONI



**HYDRATION SYSTEM COMPATIBLE /**  
TRINKSYSTEMVORBEREITUNG /  
COMPATIBLE SYSTÈME D'HYDRATION /  
PREDISPOSIZIONE PER SISTEMA  
D'IDRATAZIONE



TOUR SERIES  
HAUTE ROUTE  
40 / 38 S / 32 / 30 S